

GRIPPERS WITH TWO PARALLEL LONG-STROKE JAWS SERIES P4

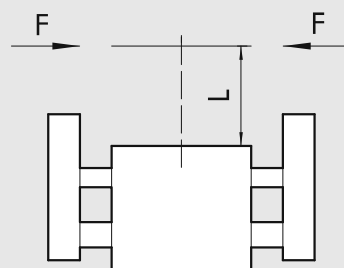


These are grippers with 2 parallel long-stroke jaws. The mechanical design makes them suitable for clamping bulky parts. All grippers, except for the smallest ones, can mount a retracting magnetic proximity sensor.



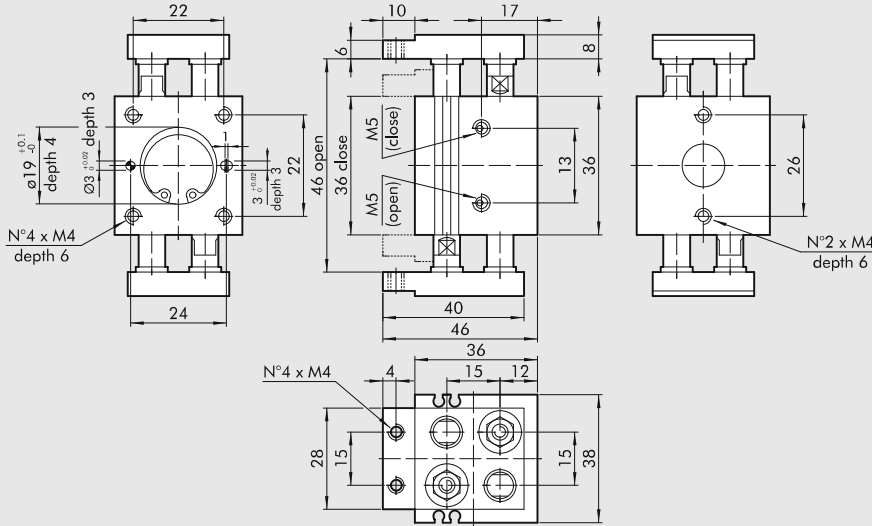
TECHNICAL DATA		P4-10	P4-12	P4-16	P4-25	P4-30
Operating pressure	bar			3 to 7		
	MPa			0.3 to 0.7		
	psi			43 to 101		
Operating temperature	°C			-10 to +80		
Maximum operating frequency	cycles/s			1		
Fluid		20 µm filtered, lubricated or unlubricated air; lubrication if used, it must be continuous				
Bore	mm	2 x 10	2 x 12	2 x 16	2 x 30	2 x 30
Single jaw stroke	mm	5	10	15	30	60
Clamping force at 6.3 bar 20 mm from the top surface during opening and closing	N	30	45	75	280	280
Weight	kg	0.18	0.3	0.5	2.95	3.7

TABLE OF CLAMPING FORCES FOR VARIOUS POINTS OF APPLICATION

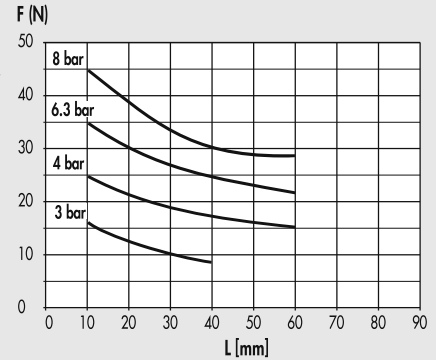


ACTUATORS
GRIPPERS WITH TWO PARALLEL LONG-STROKE JAWS – SERIES P4

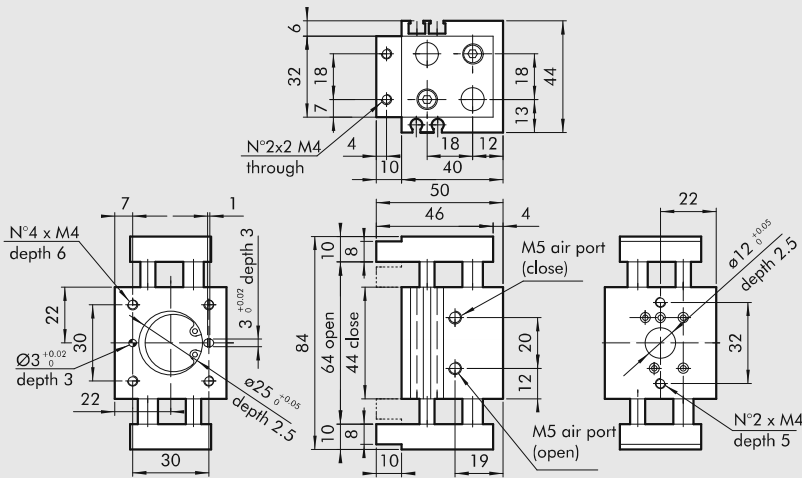
DIMENSIONS OF GRIPPER P4-10



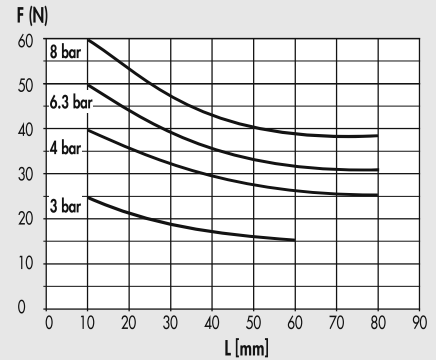
Code W1580100200 **Description** Gripper with 2 long-stroke jaws P4-10



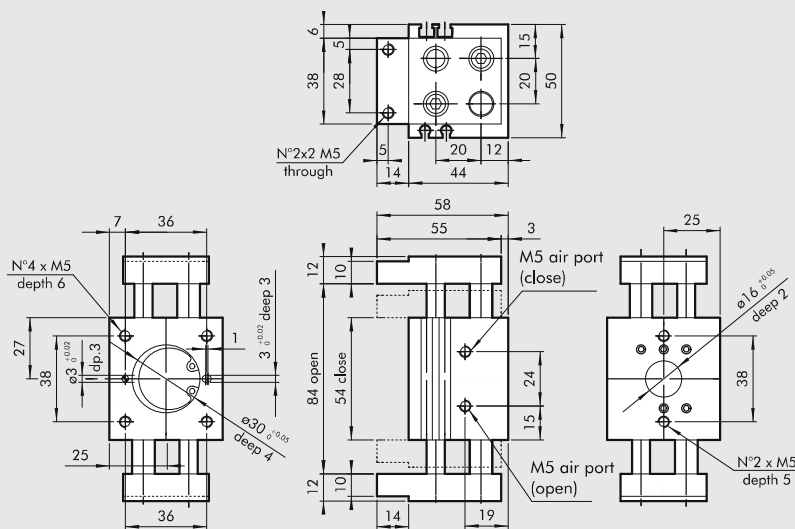
DIMENSIONS OF GRIPPER P4-12



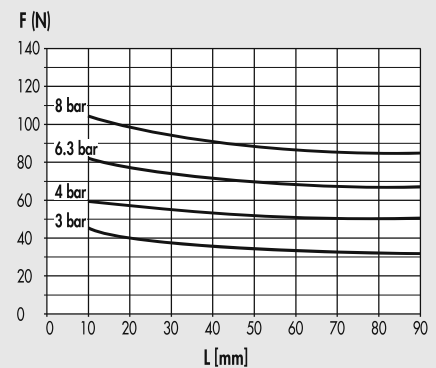
Code W1580120200 **Description** Gripper with 2 long-stroke jaws P4-12



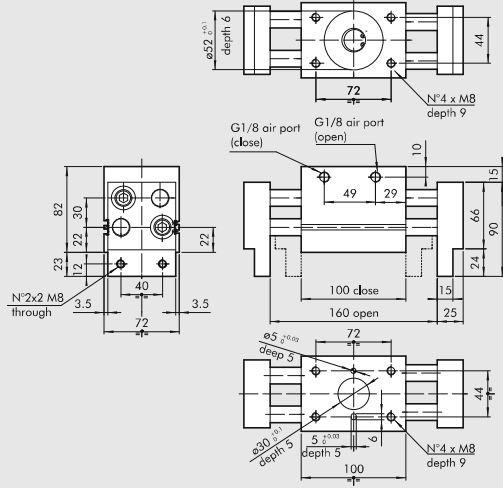
DIMENSIONS OF GRIPPER P4-16



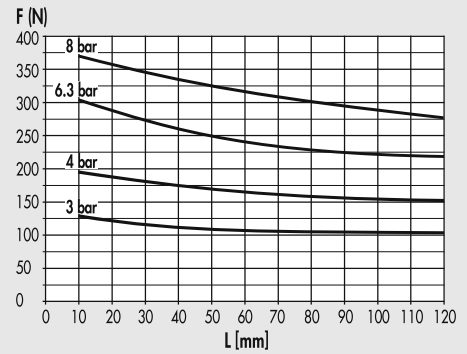
Code W1580160200 **Description** Gripper with 2 long-stroke jaws P4-16



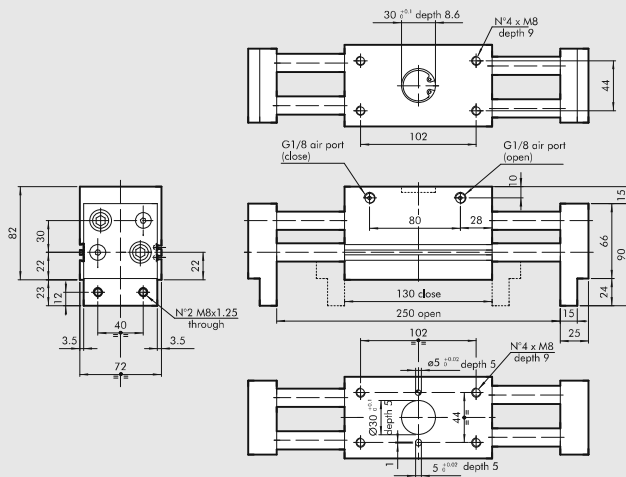
DIMENSIONS OF GRIPPER P4-25



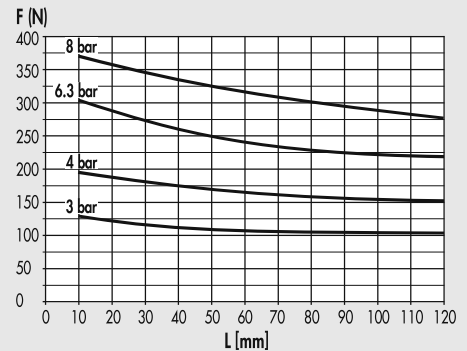
Code	Description
W1580250200	Gripper with 2 long-stroke jaws P4-25



DIMENSIONS OF GRIPPER P4-30

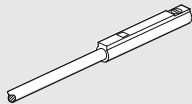


Code	Description
W1580300200	Gripper with 2 long-stroke jaws P4-30



ACCESSORIES

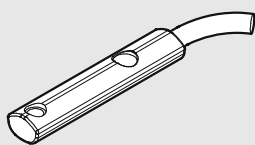
SENSOR FOR P4 10-30



Code	Description
W0950044180	Sensor REED 2 wires 2.5 m robotics
W0950045390	Sensor HALL 3 wires 2.5 m robotics

For technical data see page 1-581.

RETRACTABLE SENSOR WITH INSERTION FROM ABOVE FOR P4-12-30



Code	Description
W0952025390	HALL N.O. sensor, vertical insertion 2.5 m
W0952225390	HALL N.O. sensor, vertical insertion 2.5 m robotics
W0952029394	HALL N.O. sensor, vertical insertion 300 mm M8 robotics
W0952022180	REED N.O. sensor, vertical insertion 2.5 m
W0952222180	REED N.O. sensor, vertical insertion 2.5 m robotics
W0952028184	REED N.O. sensor, vertical insertion 300 mm M8 robotics
W0952125556	HALL N.O. sensor, vertical insertion 2 m ATEX
W0952025500*	HALL N.O. sensor, vertical insertion HS 2.5 m
W0952029504*	HALL N.O. sensor, vertical insertion HS 300 mm M8
W0952022500*	REED N.O. sensor, vertical insertion HS 2.5 m
W0952128184*	REED N.O. sensor, vertical insertion HS 300 mm M8

* For use when standard sensors do not detect the magnet, e.g. near metal masses.
Note: Individually packed. For technical data see page 1-580.