

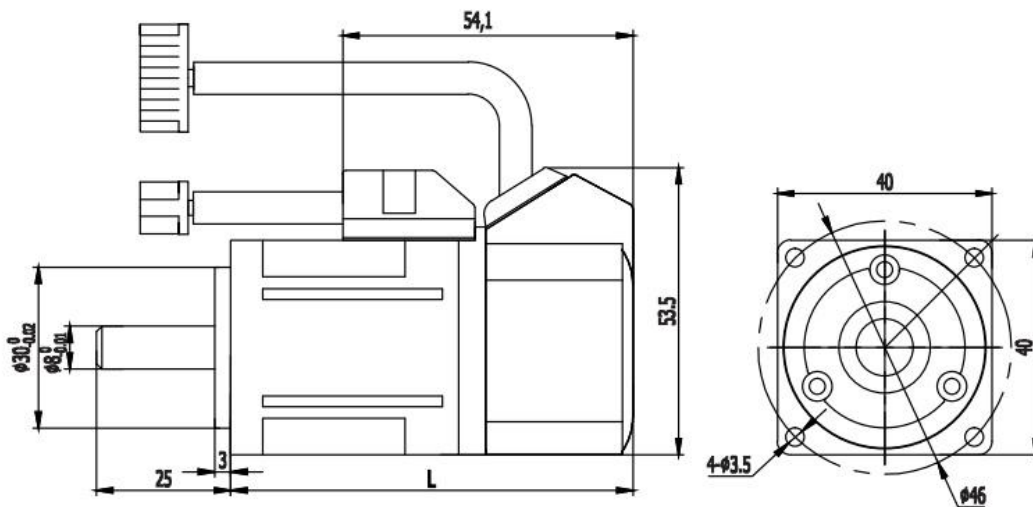
## 50W/100W AC Servo Motor

AC brushless servo motor with 50W/ 100W are optional, 1-phase or 3-phase 220V AC voltage, 3000 rpm high speed, 0.16 Nm/ 0.64 Nm rated torque can be choose and equipped with a 2,500 PPR incremental encoder. Due to the brushless design, they need less maintenance and have a longer service life.

### AC servo motor



### Dimension (mm)



Model	Power	L (without brake)	L (with brake)
ATO-SERVO-40S50	50 W	75 mm	109 mm
ATO-SERVO-40S100	100 W	90 mm	124 mm

### Specification

Model	Rated Power	Rated Current	Rated Torque	Peak Torque	Length	Torque coefficient	Torque Inertia	Line-Line Resistance	Line-Line Inductance	Electrical Time-Constant
ATO-SERV O-40S50	50W	0.4 A	0.16 Nm	0.32 Nm	75 mm	0.4 N.m/A	0.025 x 10 <sup>-4</sup> Kg.M <sup>2</sup>	108 Ω	108 mH	1ms
ATO-SERV O-40S100	100W	0.6 A	0.32 Nm	0.64 Nm	290 mm	0.53 N.m/A	0.051 x 10 <sup>-4</sup> Kg.M <sup>2</sup>	34 Ω	40 mH	1.18s

Technical Parameters	
Square Flange Size	40 mm
Rated Voltage	Single phase or three phase 220V AC
Rated Speed	3000 rpm
Voltage Constant	36.8V/ 1000r/ min
Incremental Encoder Line	2500 PPR
Absolute Encoder	17 bit, 23 bit
Insulation Class	Class B
Safety Class	IP 65
Temperature	-20°C ~ +40°C
Humidity	<90%RH, (no dewing)

### Winding and Encoder Connection

1. For servo motor winding

Motor Winding Plug	Incremental Encoder Line	U ( Red )	V (Brown)	W (Green)	PE (White)
	Absolute Encoder Line	PE (White)	U (Red)	V (Green)	W (Brown)
	Socket Number	1	2	3	4

### 2. For incremental encoder

Incremental Encoder Socket (15 Pin)	Signal Definition	5V	0V	B	Z-	U	Z	U-	A	V	W	V-	A-	B-	W-	PE
	Socket Number		2	3	4	5	6	7	8	9	10	11	12	13	14	15

### 3. For absolute encoder

Absolute Encoder Socket (7 Pin)	Signal Definition	E-	E+	SD-	0V	SD+	5V	PE
	Socket Number		2	3	4	5	6	7