

3700W 3-Phase AC Gear Motor

ATO-GEAR-HV3700

Buy 5 hp (3.7kW) AC gear motor at ideal price, input voltage 3-phase 220V/380V, gear ratio range 3:1 to 60:1 for selection, high torque 5.5~127 kg.m, low speed 570~25 rpm, shaft diameter 40mm/50mm, vertical/horizontal mounting. Optional matched brake is provided.

Basic Specification

Model	ATO-CV40-3700-10-S
Rated Power	5 hp (3700W)
Rated Voltage	3-phase 220V, 50/60Hz 3-phase 380-415V, 50/60Hz
Gear Ratio	3:1/ 5:1/ 10:1/ 15:1/ 20:1/ 25:1/ 30:1/ 40:1/ 45:1/ 50:1/ 60:1
Duty	Continuous running
Working Environment	Temperature 10°C~+40°C Humidity ≤90%
Pole	4P (6P)
Working Height	≤1000m
Standard	GB755/IEC-60034

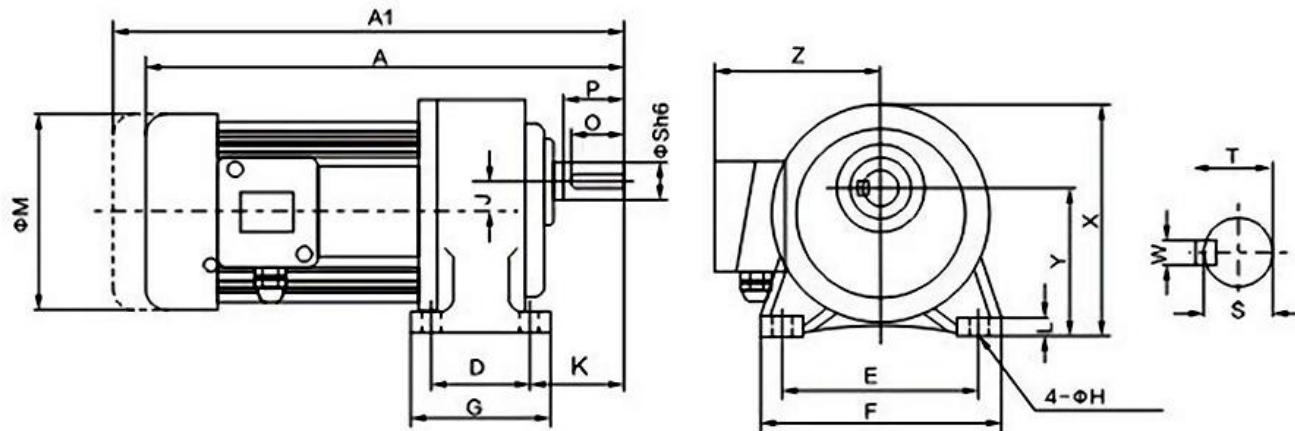
3.7kW AC Gear Motor Load Current Value

Phase	3-Phase							
Frequency	50Hz				60Hz			
Voltage	220V	380V	415V	440V	220V	380V	440V	460V
Current	13.85A	8.03A	7.34A	6.93A	13.50A	7.82A	6.75A	6.46A

3.7kW AC Gear Motor Output Torque

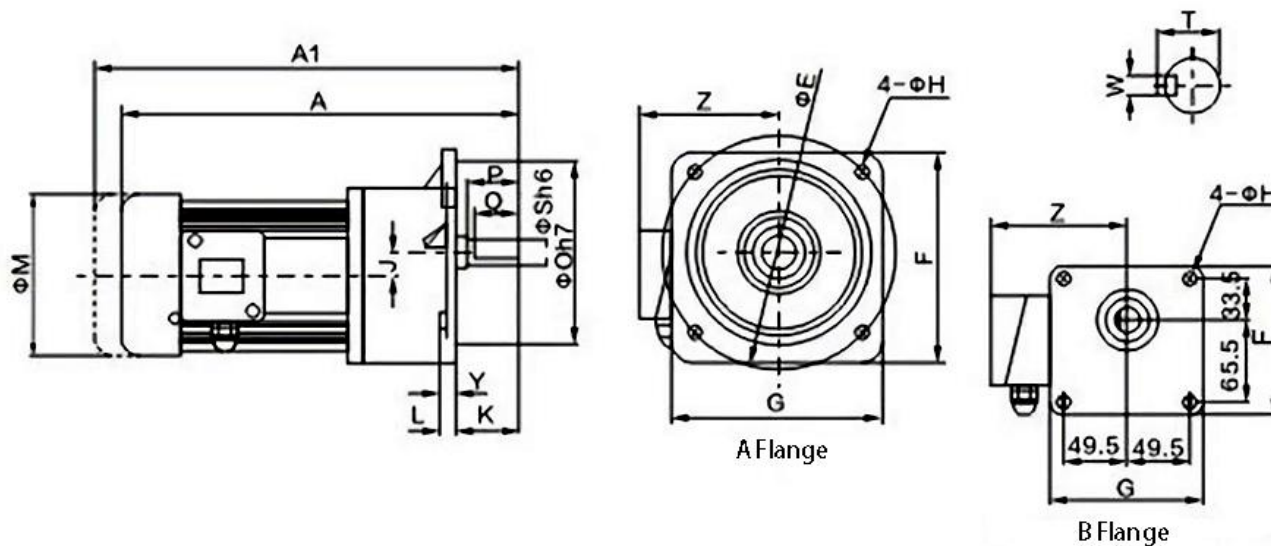
Gear Ratio		3	5	10	15	20	25	30	40	45	50	60
Output Speed (rpm)	50Hz	465	300	150	100	75	60	50	37	33	30	25
	60Hz	570	360	180	120	90	72	60	45	40	36	30
Output Torque (kg.m)	50Hz	6	11	22	32.6	43.6	53.9	64.7	86.3	98.5	107	127
	60Hz	5.5	10.1	20	29.8	36	49.53	58.8	78.4	81.7	97	115

3.7kW Horizontal AC Gear Motor Dimensions (Unit: mm)



Gear Ratio	Shaft Diameter	A	D	E	F	G	H	J	K	L	M	X	Y	Z	S	P	Q	W	T	Weight (kg)
3~10	40	560	150	210	265	205	15	36	83	23	220	250	165	160	40	65	60	10	43.5	62
15~60	50	620	170	265	335	238	18	51	120	31.5	220	308	200	160	50	80	75	14	54	98

3.7kW Vertical AC Gear Motor Dimensions (Unit: mm)



Gear Ratio	Shaft Diameter	A	D	E	F	G	H	J	K	L	M	Y	Z	S	P	Q	W	T	Weight (kg)
3~10	40	560	230	310	290	268	15	36	83	21	220	5	160	40	65	60	10	43.5	62
15~60	50	620	280	390	369	341	18	51	92	25	220	5	160	50	80	75	14	54	87